

ISOMETRIC VIEW  
 NTS.



**JWI LOUVRES PTY. LTD.**

31 Prime Drive  
 Seven Hills NSW 2147  
 Ph: 02 9674 3600 Fax: 02 9674 3530

SYSTEM:

**JWI 300.E - O**

PART No.:

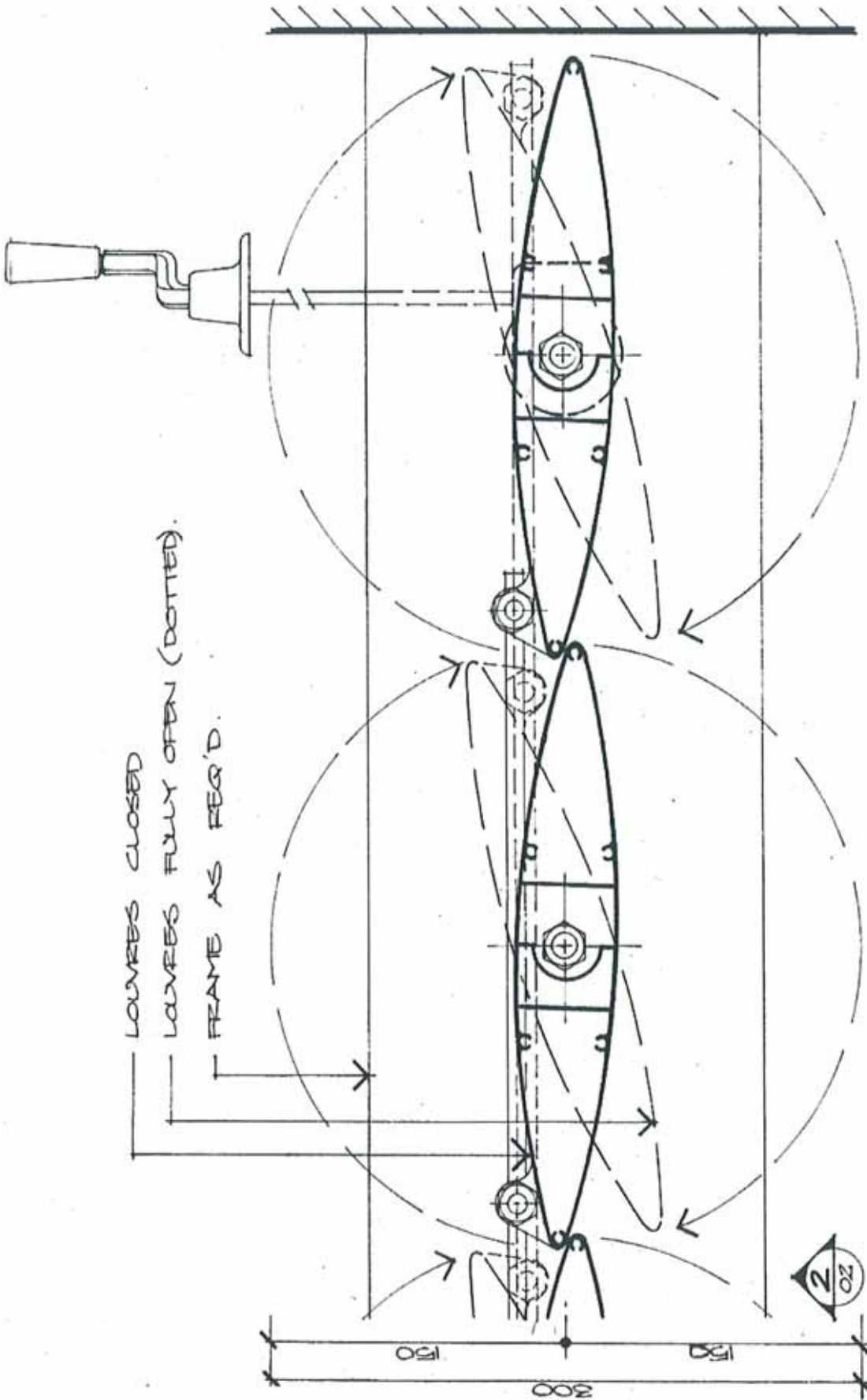
DWG TITLE:

**300mm ELLIPSOID - OPERABLE  
DETAILS**

DWG No.:

**300-01**


PAGE No.:

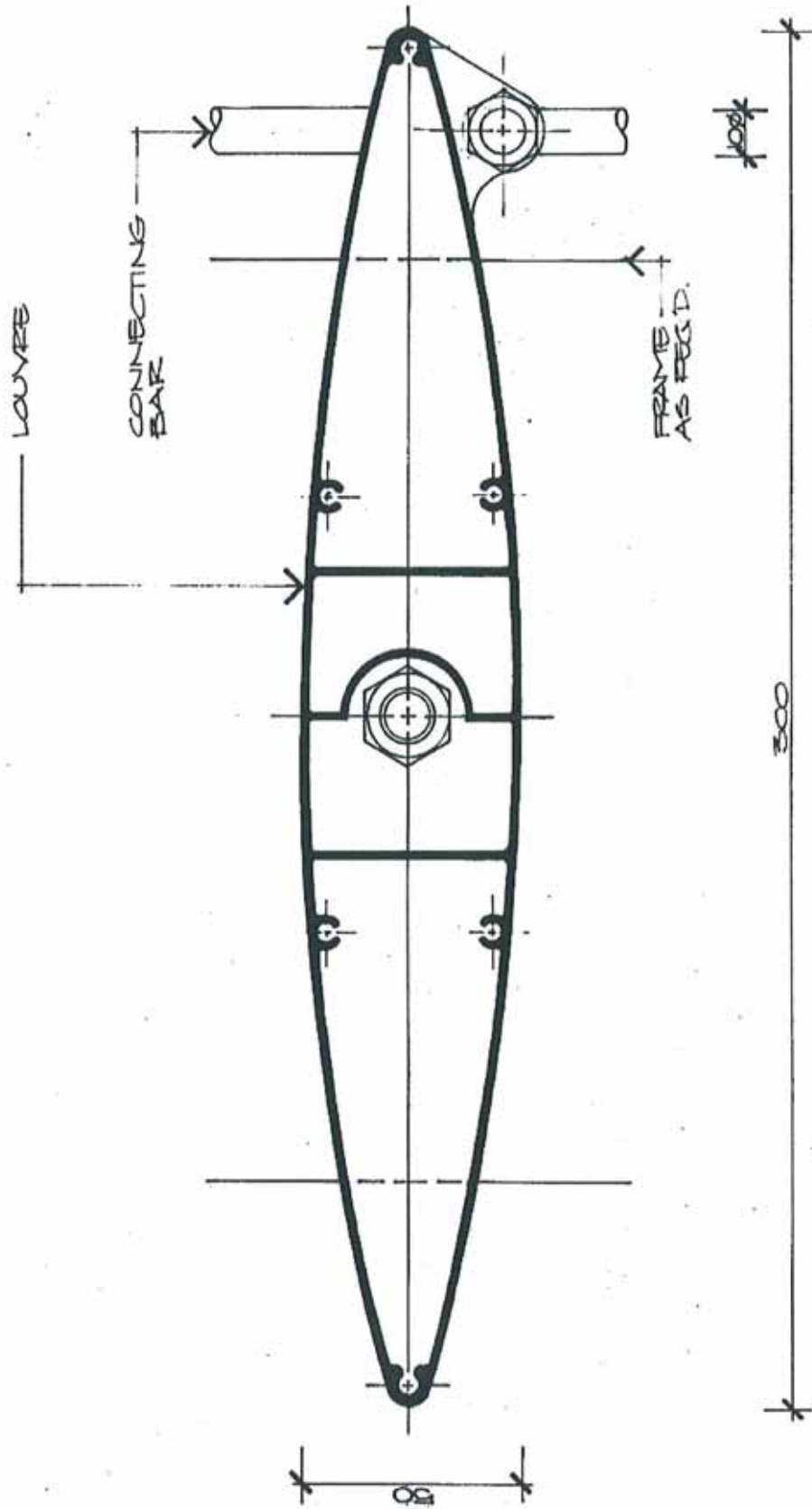


LOUVRES CLOSED  
 LOUVRES FULLY OPEN (DOTTED).  
 FRAME AS PER'D.



1 PLAN  
 OZ DETOUT 1:2 @ AS

 <p><b>JWI LOUVRES PTY. LTD.</b>          31 Prime Drive          Seven Hills NSW 2147          Ph: 02 9674 3600 Fax: 02 9674 3530</p>	SYSTEM:	<b>JWI 300.E - O</b>	DWG No.:
	PART No.:		<b>300-02</b>
	DWG TITLE:	<b>300mm ELLIPSOID - OPERABLE          DETAILS</b>	PAGE No.:

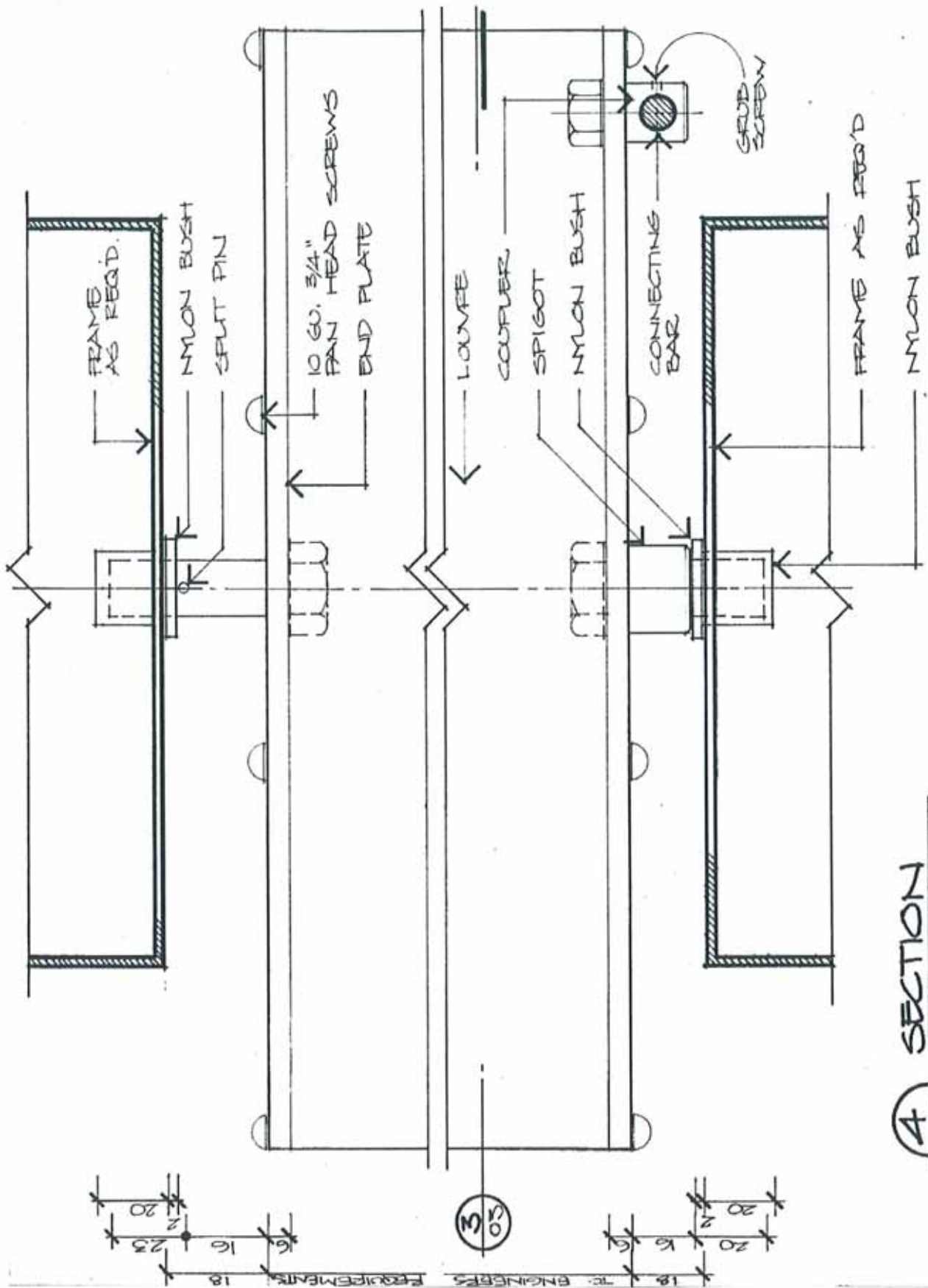


3 PLAN  
DETAIL 1:1 @ A3



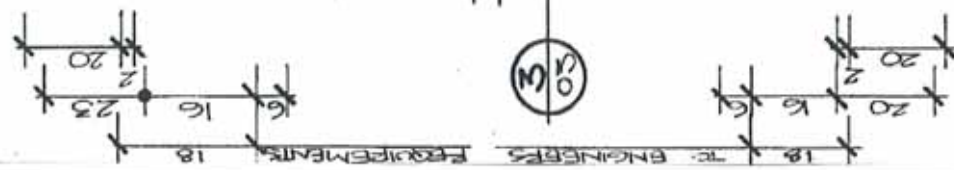
**JWI LOUVRES PTY. LTD.**  
 31 Prime Drive  
 Seven Hills NSW 2147  
 Ph: 02 9674 3600 Fax: 02 9674 3530

SYSTEM:	<b>JWI 300.E - O</b>	DWG No.:	<b>300-04</b>
PART No.:			
DWG TITLE:	<b>300mm ELLIPSOID - OPERABLE DETAILS</b>	PAGE No.:	



SECTION  
DETAIL 1:1 @ A3

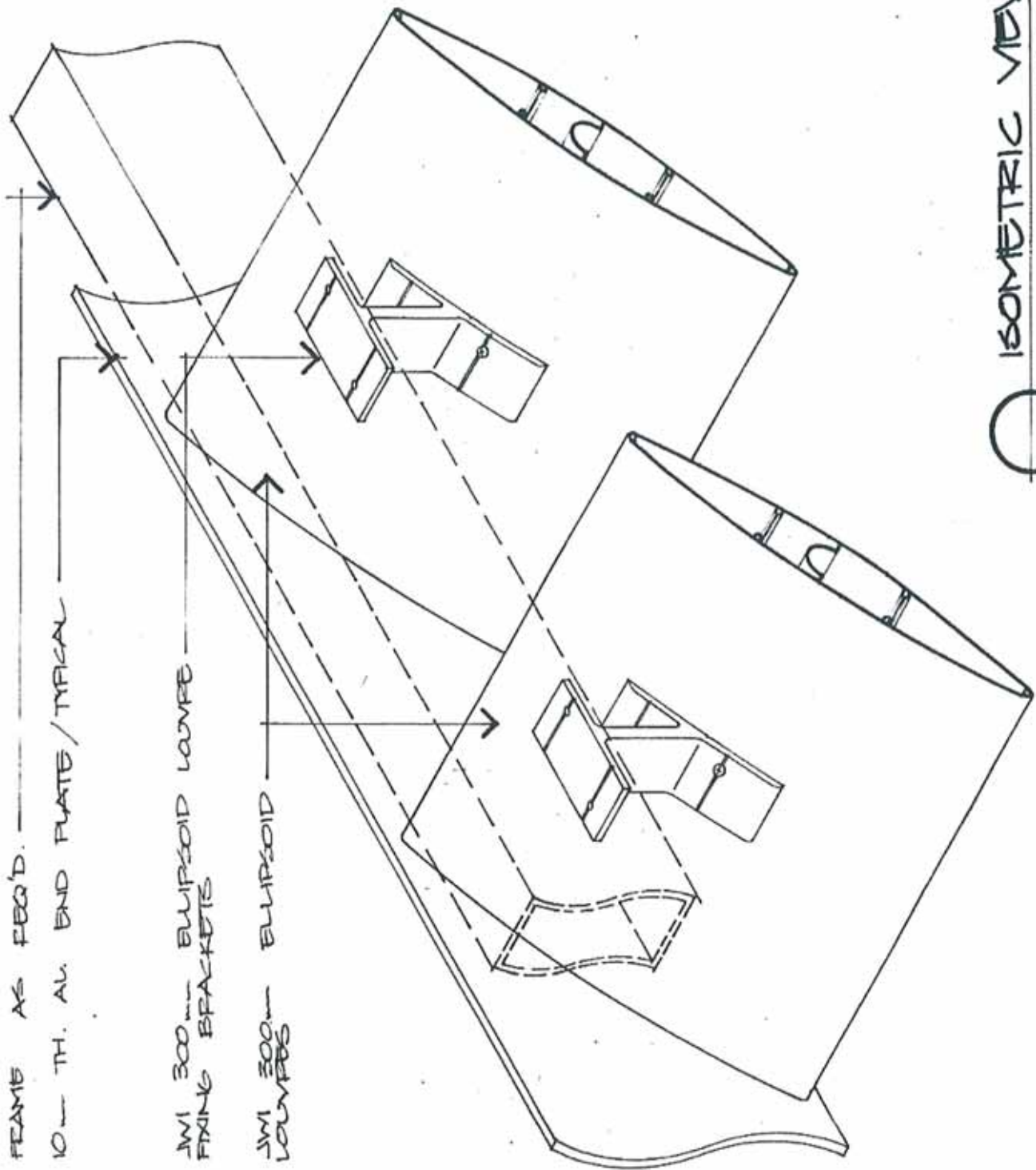
4  
03



JWI LOUVRES PTY. LTD.

31 Prime Drive  
Seven Hills NSW 2147  
Ph: 02 9674 3600 Fax: 02 9674 3530

SYSTEM:	JWI 300.E - O	DWG No.:	300-05
PART No.:			
DWG TITLE:	300mm ELLIPSOID - OPERABLE DETAILS	PAGE No.:	



ISOMETRIC VIEW  
1:25 @ A3

FRAME AS REQ'D.

10mm TH. AL. END PLATE / TYPICAL

JWI 300mm ELLIPSOID LOUVER  
FIXING BRACKETS

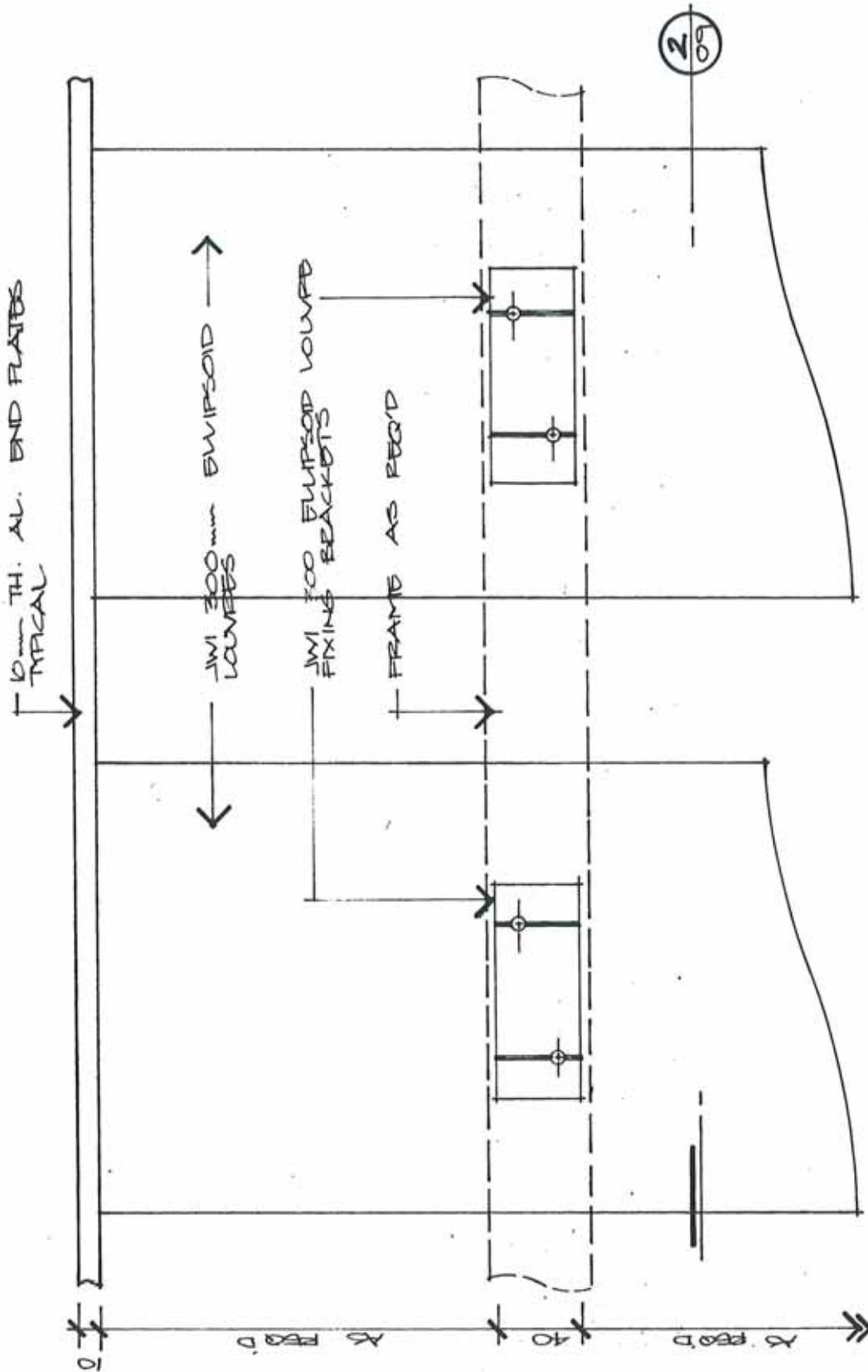
JWI 300mm ELLIPSOID  
LOUVRES




**JWI LOUVRES PTY. LTD.**

31 Prime Drive  
Seven Hills NSW 2147  
Ph: 02 9674 3600 Fax: 02 9674 3530

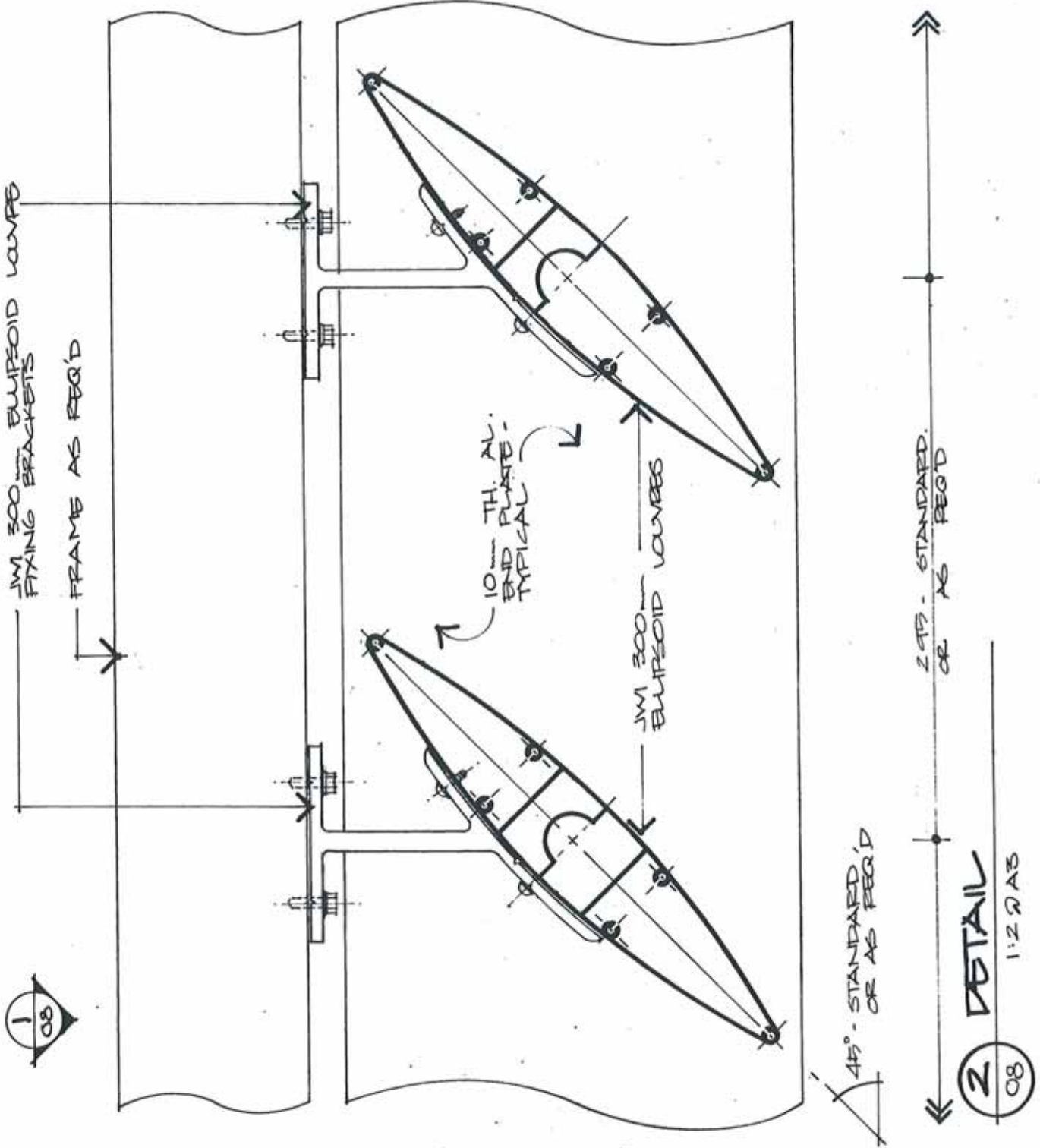
SYSTEM:	<b>JWI 300.E - F</b>	DWG No.:	<b>300-07</b>
PART No.:			
DWG TITLE:	<b>300mm ELLIPSOID - FIXED DETAILS</b>	PAGE No.:	



1 PLAN  
1:2.2A3

 <p><b>JWI LOUVRES PTY. LTD.</b> 31 Prime Drive Seven Hills NSW 2147 Ph: 02 9674 3600 Fax: 02 9674 3530</p>	SYSTEM:	<b>JWI 300.E - F</b>	DWG No.:
	PART No.:		<b>300-08</b>
	DWG TITLE:	<b>300mm ELLIPSOID - FIXED DETAILS</b>	PAGE No.:

All drawings and technical information contained on this page remain the sole property of JWI Louvres Pty. Ltd. No information on this page is to be reproduced in part or in full without the prior consent of JWI Louvres Pty. Ltd.



**JWI LOUVRES PTY. LTD.**

31 Prime Drive  
Seven Hills NSW 2147  
Ph: 02 9674 3600 Fax: 02 9674 3530

SYSTEM:

**JWI 300.E - F**

PART No.:

DWG TITLE:

**300mm ELLIPSOID - FIXED  
DETAILS**

DWG No.:

**300-09**

PAGE No.: