

**JWI LOUVRES PTY. LTD.**

31 Prime Drive  
 Seven Hills NSW 2147  
 Ph: 02 9674 3600 Fax: 02 9674 3530

SYSTEM:

**JWI 200.E - O**

DWG No.:

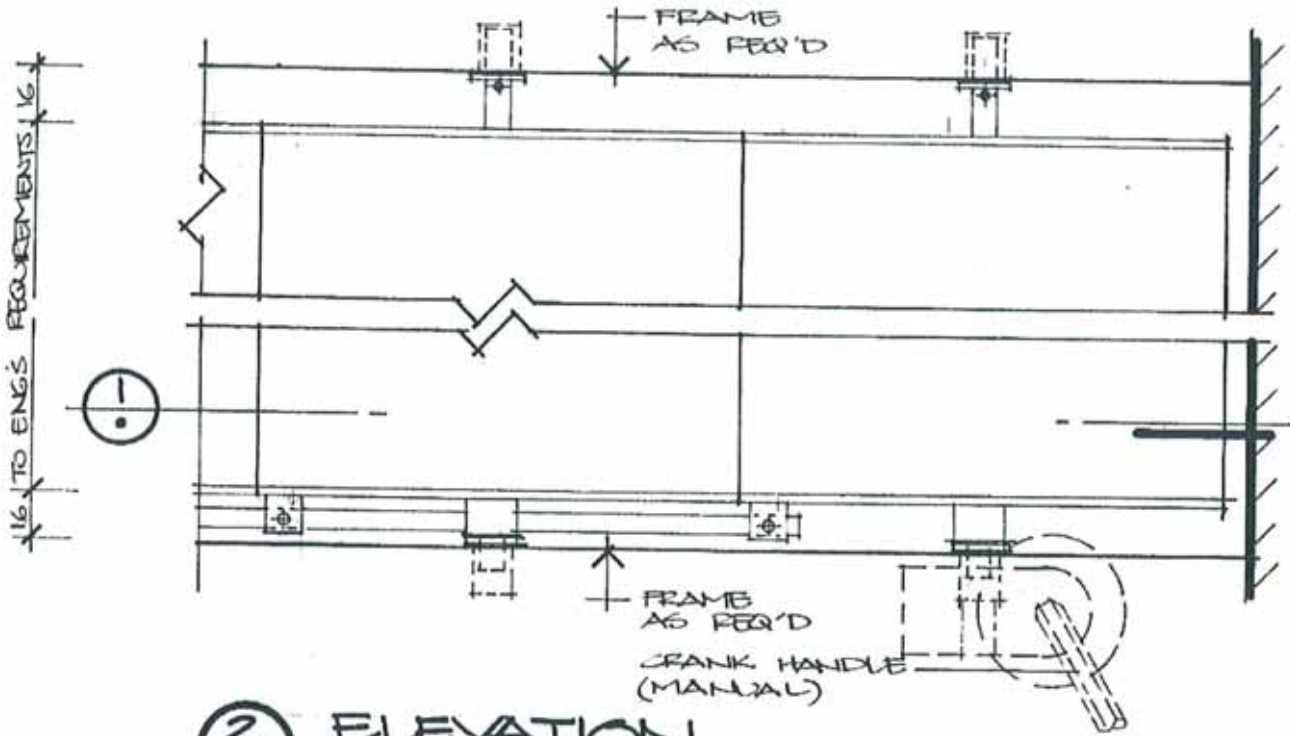
**200-01**

PART No.:

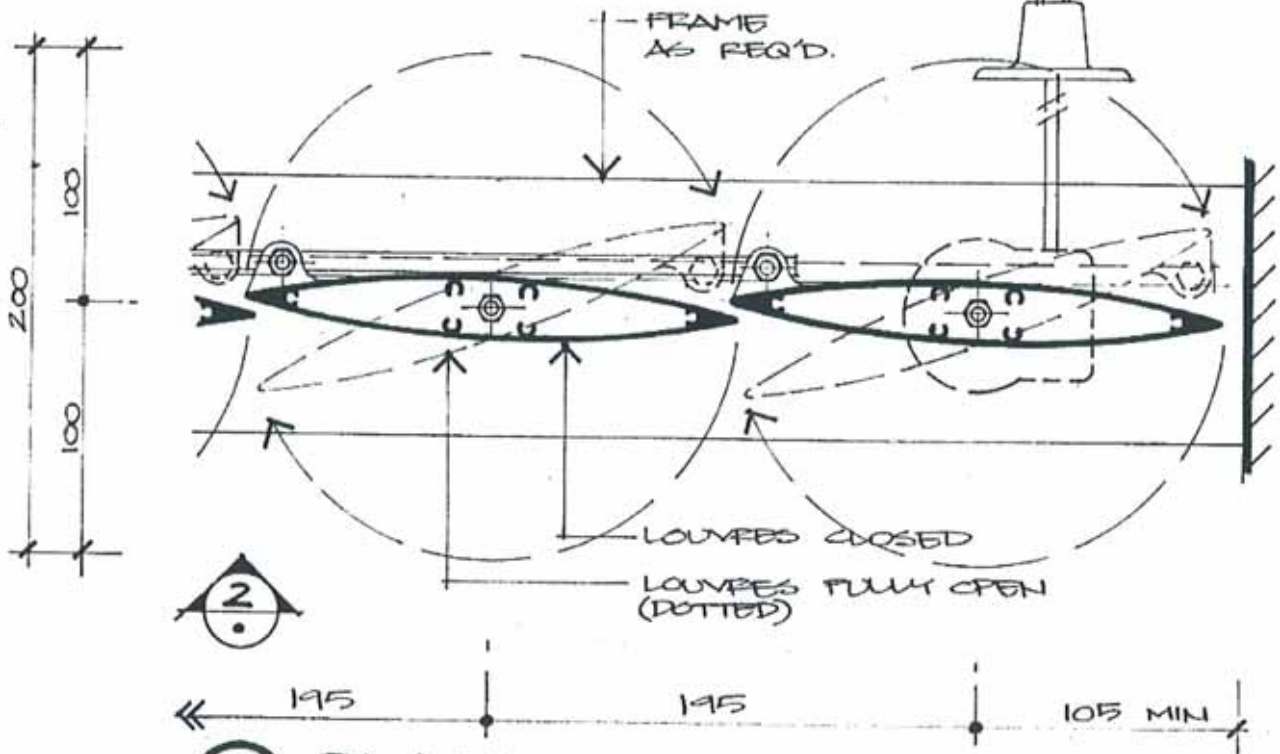
DWG TITLE:

**200mm ELLIPSOID - OPERABLE  
 DETAILS**

PAGE No.:



**2** ELEVATION  
SETOUT 1:2 @ A3

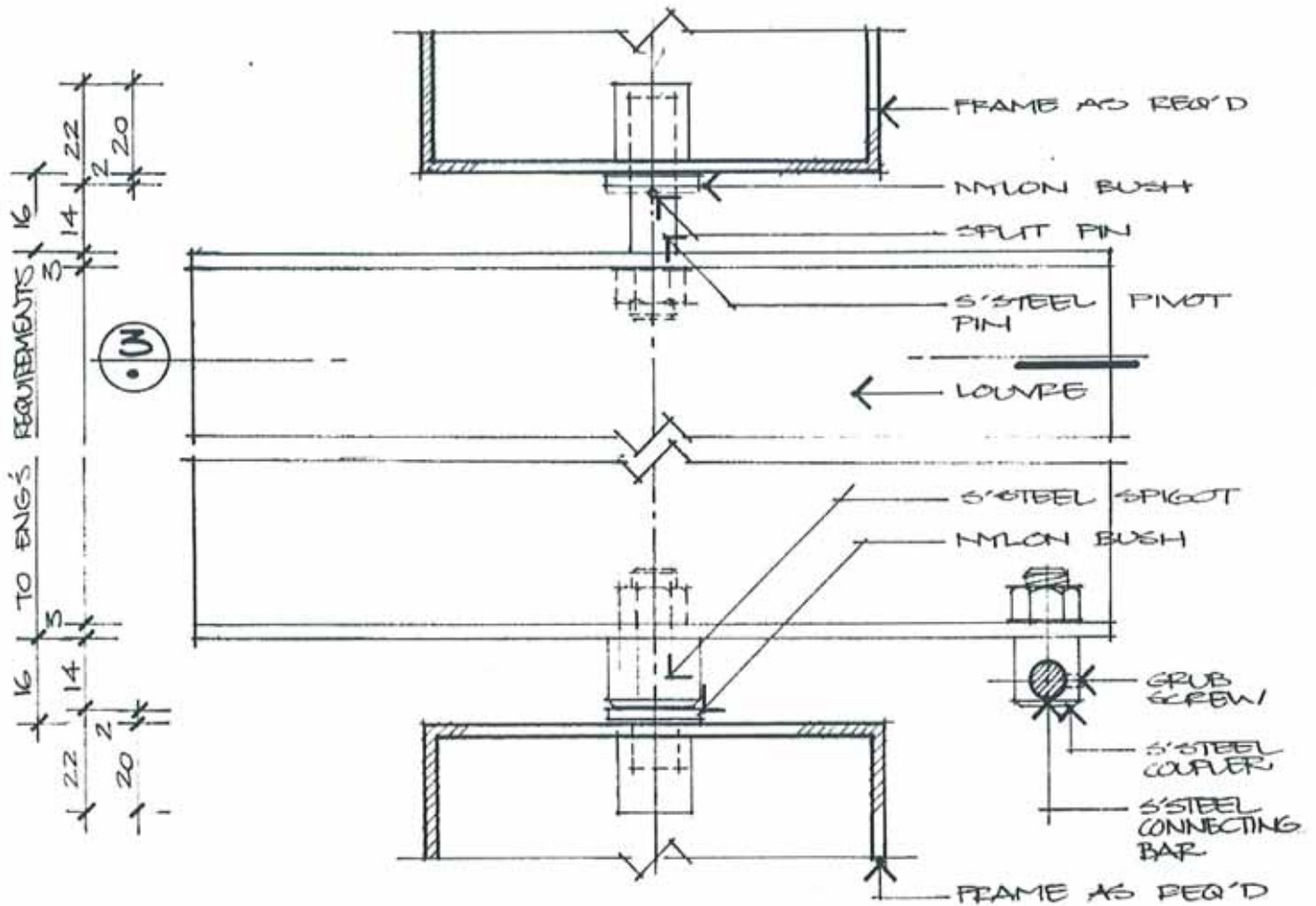


**1** PLAN  
SETOUT 1:2 @ A3

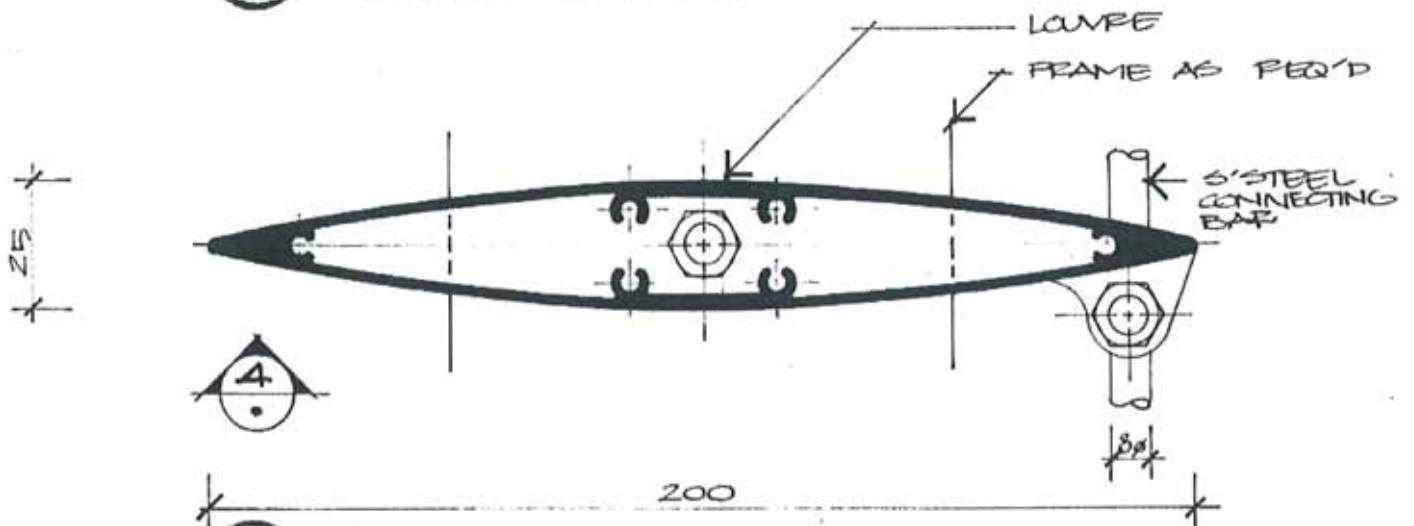


**JWI LOUVRES PTY. LTD.**  
31 Prime Drive  
Seven Hills NSW 2147  
Ph: 02 9674 3600 Fax: 02 9674 3530

SYSTEM:	<b>JWI 200.E - O</b>	DWG No.:	<b>200-02</b>
PART No.:			
DWG TITLE:	<b>200mm ELLIPSOID - OPERABLE DETAILS</b>	PAGE No.:	



**4** SECTION  
DETAIL 1:1 @ A3



**3** PLAN  
DETAIL 1:1 @ A3



**JWI LOUVRES PTY. LTD.**

31 Prime Drive  
Seven Hills NSW 2147  
Ph: 02 9674 3600 Fax: 02 9674 3530

SYSTEM:

**JWI 200.E - O**

PART No.:

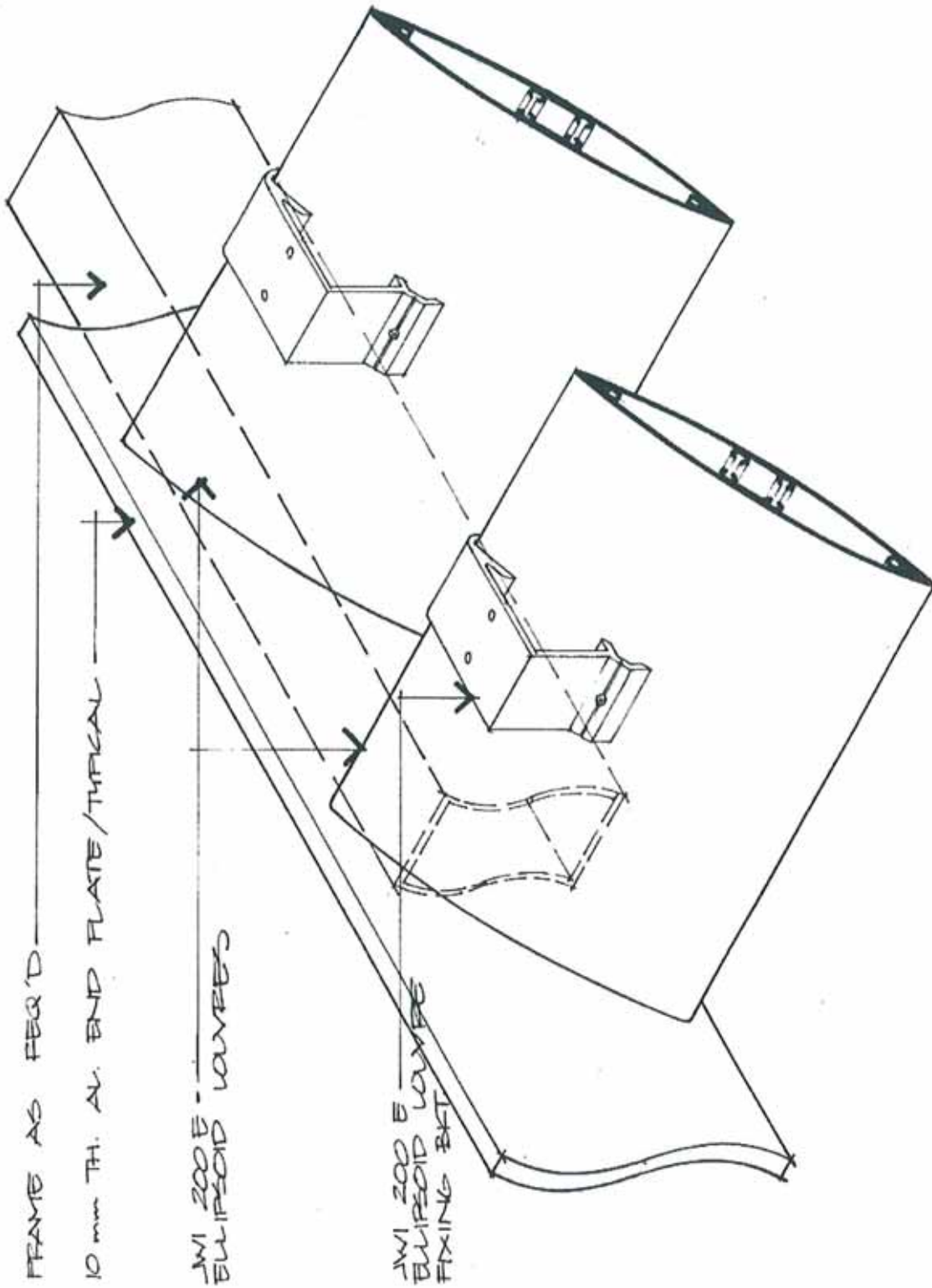
DWG No.:

**200-03**


DWG TITLE:

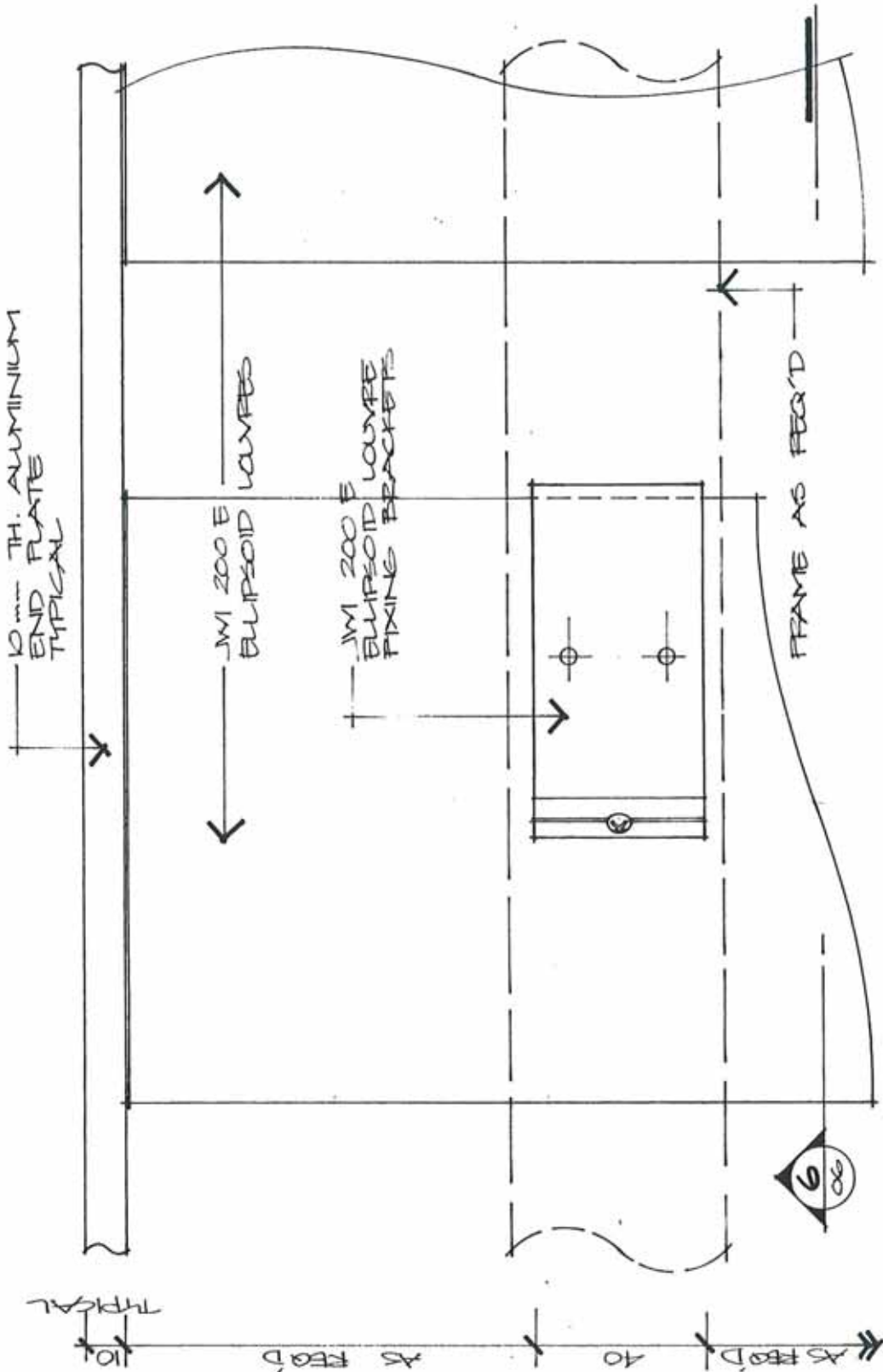
**200mm ELLIPSOID - OPERABLE  
DETAILS**

PAGE No.:



○ ISOMETRIC VIEW  
 1:2 D A3


 <p><b>JWI LOUVRES PTY. LTD.</b></p> <p>31 Prime Drive          Seven Hills NSW 2147          Ph: 02 9674 3600 Fax: 02 9674 3530</p>	SYSTEM:	<b>JWI 200.E - F</b>	DWG No.:
	PART No.:		<b>200-04</b>
	DWG TITLE:	<b>200mm ELLIPSOID - FIXED DETAILS</b>	PAGE No.:

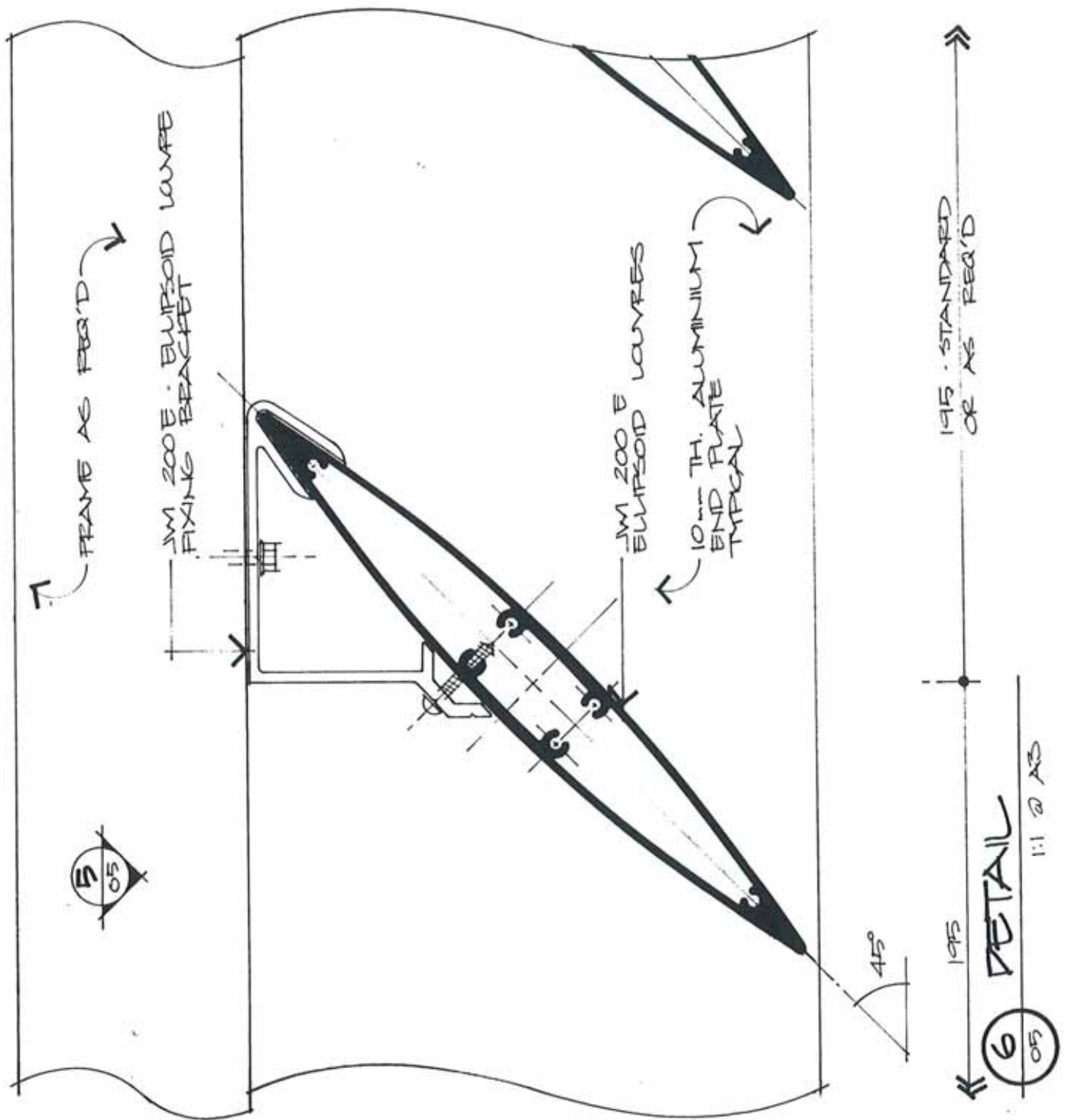


5 ∞

DETAIL

1:1.2 AS

 <p><b>JWI LOUVRES PTY. LTD.</b></p> <p>31 Prime Drive Seven Hills NSW 2147 Ph: 02 9674 3600 Fax: 02 9674 3530</p>	SYSTEM:	<b>JWI 200.E - F</b>	DWG No.:
	PART No.:		<b>200-05</b>
	DWG TITLE:	<b>200mm ELLIPSOID - FIXED DETAILS</b>	PAGE No.:



**JWI LOUVRES PTY. LTD.**

31 Prime Drive  
Seven Hills NSW 2147  
Ph: 02 9674 3600 Fax: 02 9674 3530

SYSTEM:	<b>JWI 200.E - F</b>	DWG No.:	<b>200-06</b>
PART No.:			
DWG TITLE:	<b>200mm ELLIPSOID - FIXED DETAILS</b>	PAGE No.:	